



PARKLET - RESTAURANT DECK EXPANSION STUDY

August 2020

How might we support restaurant and small business owners with design and planning resources to re-open to customers while honoring safe distancing practices and adhering to city guidelines?

This is the question City Open Workshop aimed to address through its Restaurant Reopening Guide, which was created in partnership with the Illinois Restaurant Association.

As part of the Core Team of architects and designers offering consultations to restaurants in need of retrofitting their spaces in light of the State of Illinois Phase 1 through 5 plan of re-opening, Wyzendale developed a Parklet concept. This concept enables restaurant owners to use existing parking spaces to expand outdoor dining.

Wyzendale's Parklet concept enables restaurant owners to find new ways to serve customers while keeping them at a safe distance from one another through the novel use of existing parking spaces.





A prefabricated wooden deck with metal planters and metal siding front panels enables 12 extra patrons to be seated per Parklet unit. This ensures the short term viability of the restaurant by maintaining their valuable customer base and brings a slower pace to the streetscape for dining. Parking Revenue can be offset by use of the public way permitting or Parklet rental from a third party.

Download our full Parklet concept [here](#).

To schedule a consultation with Wyzendale to discuss safe re-opening strategies and resources, email info@wyzendale.com.

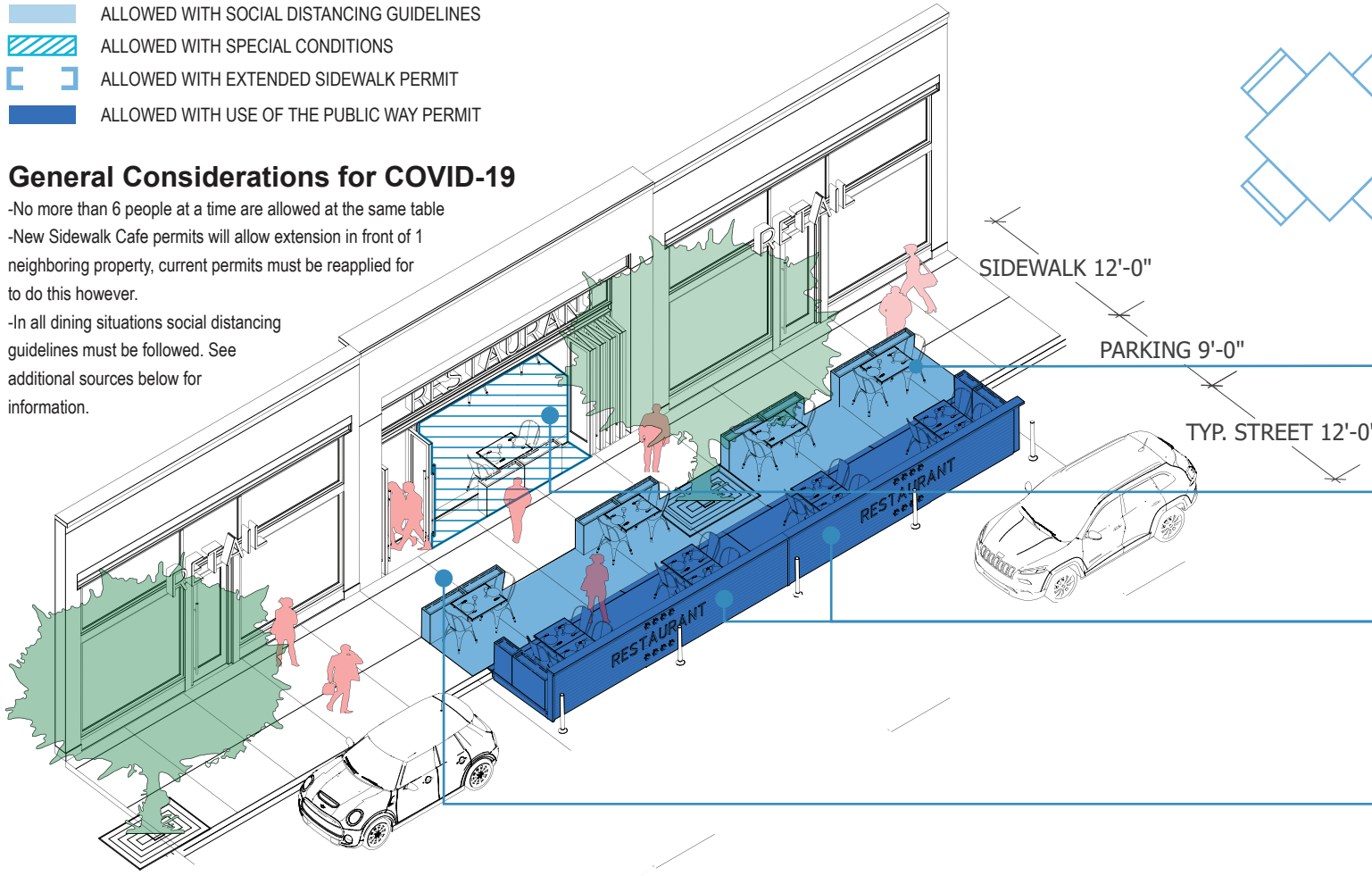
Understanding Parklets / People Spots

DIAGRAM KEY

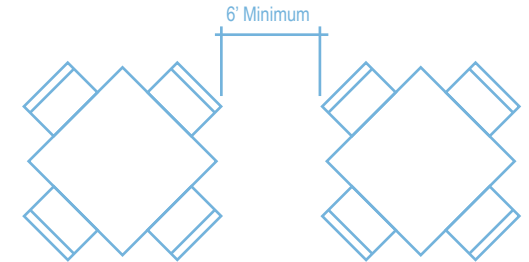
-  ALLOWED WITH SOCIAL DISTANCING GUIDELINES
-  ALLOWED WITH SPECIAL CONDITIONS
-  ALLOWED WITH EXTENDED SIDEWALK PERMIT
-  ALLOWED WITH USE OF THE PUBLIC WAY PERMIT

General Considerations for COVID-19

- No more than 6 people at a time are allowed at the same table
- New Sidewalk Cafe permits will allow extension in front of 1 neighboring property, current permits must be reapplied for to do this however.
- In all dining situations social distancing guidelines must be followed. See additional sources below for information.



SIDEWALK TABLE SPACING DIAGRAM



Sidewalk cafes can extend into the public way in front of one neighboring property. A sidewalk permit is required to be procured from Department of Buildings.

Tables are considered "outdoor" where 50% or more of a wall can be removed via the opening of windows, doors, or panels and tables are within 8' of the opening

Dining in the public way is allowed provided a use of the public way permit is granted. Install Bollards or other barriers at 10 feet on center. See also CDOT guidelines for "People Spot". Max. deck size 80ft. x 6ft. (40ft. x 6ft. shown)

Sidewalk dining is allowed as long as tables are arranged such that tables are 6' apart. See diagram above. Sidewalk dining must also have a full boundary around it except at the entry location.

ADDITIONAL INFORMATION/SOURCES

- <https://dceocovid19resources.com/restore-illinois/restore-illinois-phase-4/>
- <https://www.chicago.gov/city/en/sites/covid-19/home/reopening-business-portal/business-guidelines.html>
- <https://www.chicago.gov/city/en/depts/bacp/sbc/obtaining-a-sidewalk-cafe-permit0.html>
- https://www.chicago.gov/city/en/depts/cdot/supp_info/make_way_for_people/people_spot.html
- <https://chicagocompletestreets.org/streets/mwfp/peoplespots/>
- <http://groundplaysf.org/wp-content/uploads/San-Francisco-Parklet-Manual.pdf>



Understanding Parklets / People Spots

Parklet / People Spot General Design



Operable doors to stack within building footprint. This provides the ability to add tables and to project a more open dining experience.

Fabric Canopy & Frame provide shelter from sun & rain while adding greater street presence for the restaurant.

Restaurant Signage as a branding opportunity. Changing the color and texture of the frontage add to the richness of the built environment

Bollards at 10'-0" on center set 12" out from edge of Parklet / People Spot provide the mandatory safety barrier to make the users of the Parklet / People Spot feel safe using.

Maintaining a six ft. sidewalk width is important to maintain a safe passage for the full extent of the Parklet / People Spot. Minimize perimeter openings into the Parklet / People Spot so cross pedestrian traffic doesn't cause congestion

Benefits / Opportunities

Re-imagine our streets

Complete streets balance the needs of providing walkable streets, safe cycle ways, transit paths, and traveling by car. Parklets / People Spots are a relatively low-cost, easily implementable approach to achieving greater engagement and interest for all users of the street.

Encourage Improved Pedestrian Safety & Activity

Parklets / People Spots provide buffer areas between traffic lanes and the sidewalk. They also provide outdoor gathering spaces, especially when local or City parks may be far away.

Support Local Businesses

Parklets / People Spots enhance the pedestrian environment which can help make the street feel more safe and inviting for people shopping, running errands, and accessing services in their own neighborhoods. Ultimately, it fosters people spending time in their own "urban backyard."

Fosters Neighborhood Interaction & Investment

Parklets invite pedestrians to sit and gather with friends & neighbors. In many cases, neighbors have participated in the design, financing, construction, and stewardship of Parklets / People Spots.

ADDITIONAL INFORMATION/SOURCES

- <https://dceocovid19resources.com/restore-illinois/restore-illinois-phase-4/>
- <https://www.chicago.gov/city/en/sites/covid-19/home/reopening-business-portal/business-guidelines.html>
- <https://www.chicago.gov/city/en/depts/bacp/sbc/obtaining-a-sidewalk-cafe-permit0.html>
- https://www.chicago.gov/city/en/depts/cdot/supp_info/make_way_for_people/people_spot.html
- <https://chicagocompletestreets.org/streets/mwfp/peoplespots/>
- <http://groundplaysf.org/wp-content/uploads/San-Francisco-Parklet-Manual.pdf>

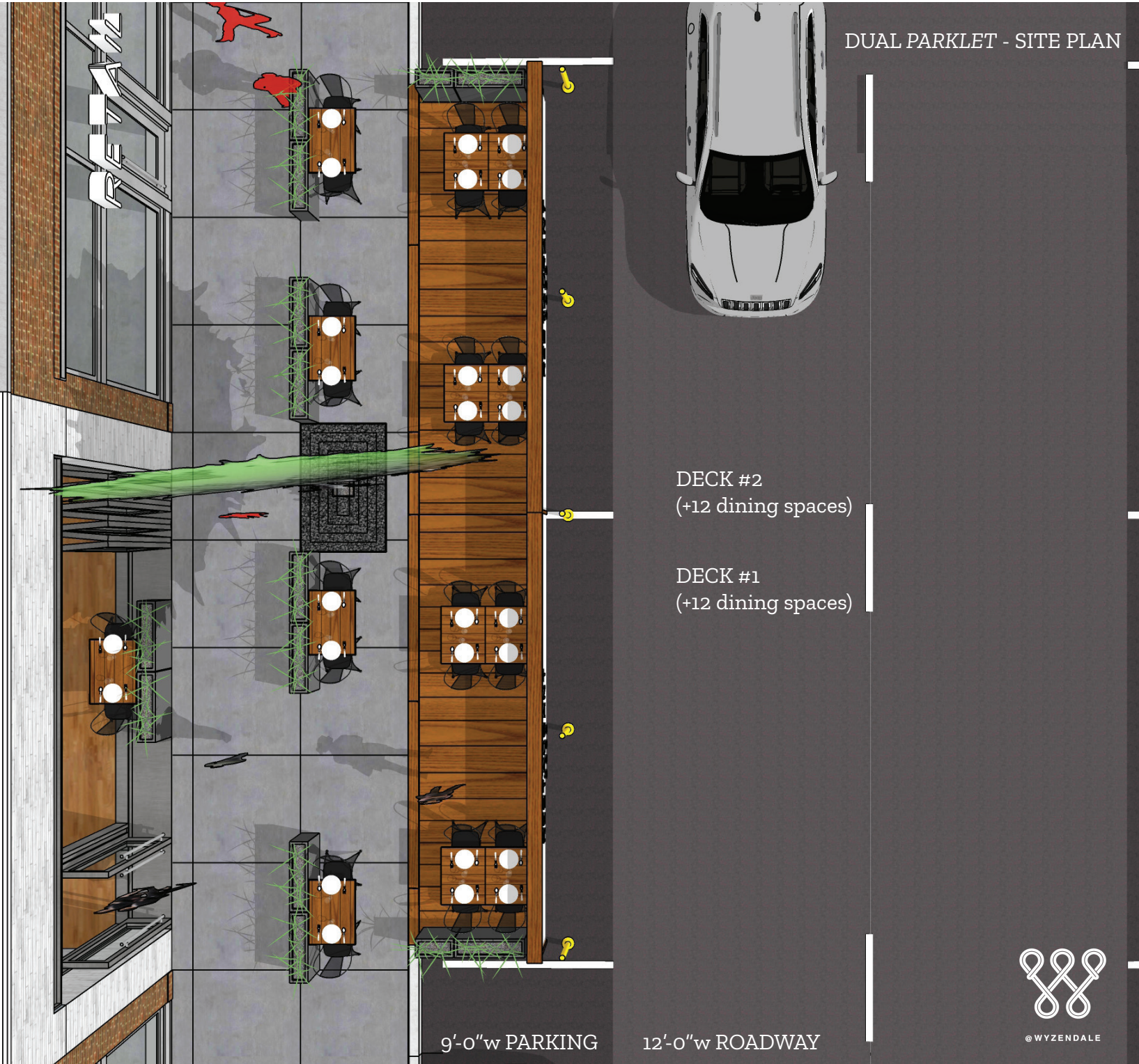


DUAL PARKLET - SITE PLAN

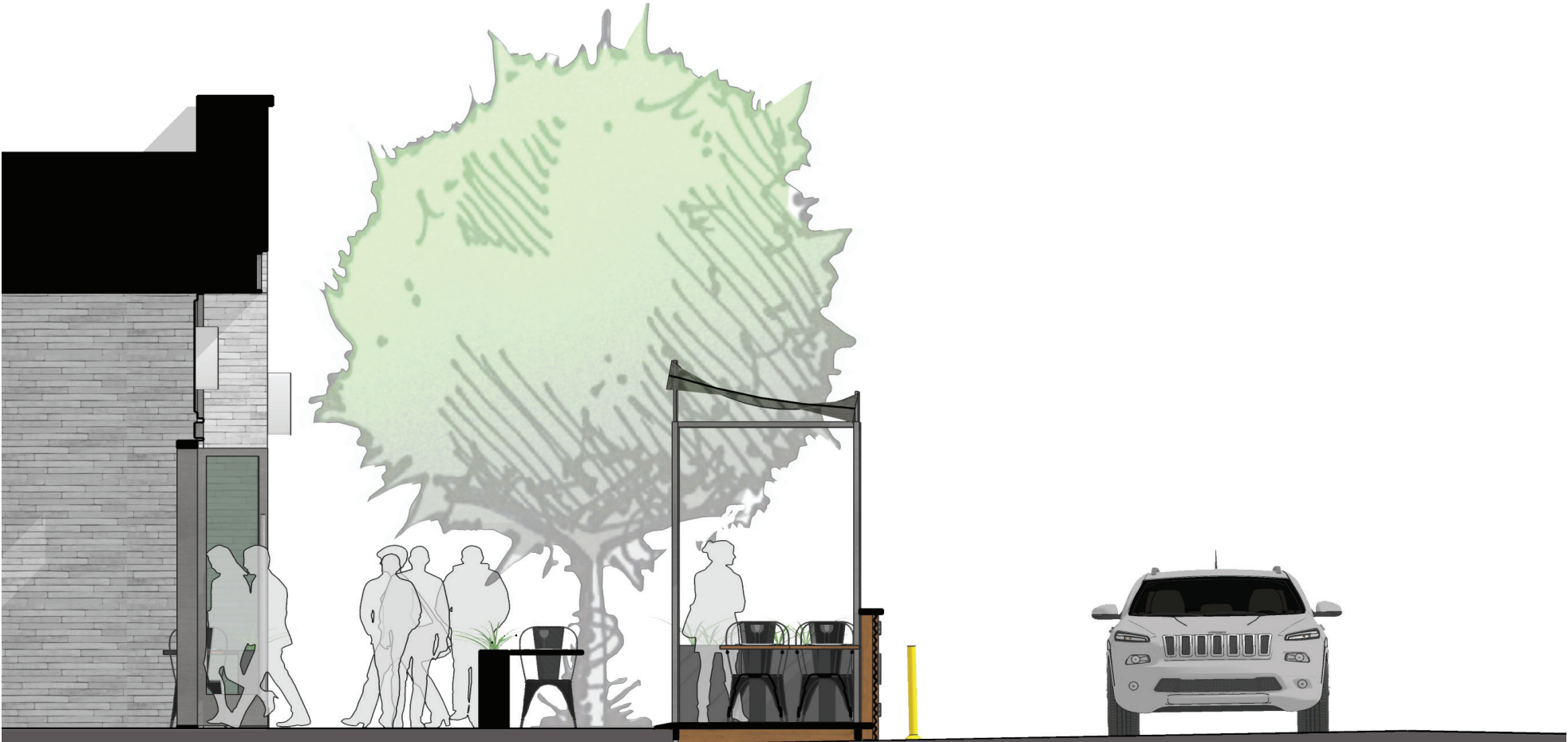
ADJACENT RETAIL

OPERABLE DOORS
(+2 Dining Spaces)

RESTAURANT



@WYZENDALE



RESTAURANT

6'-0" CLEAR
SIDEWALK

4' TO 6' TREE &
DINING ZONE

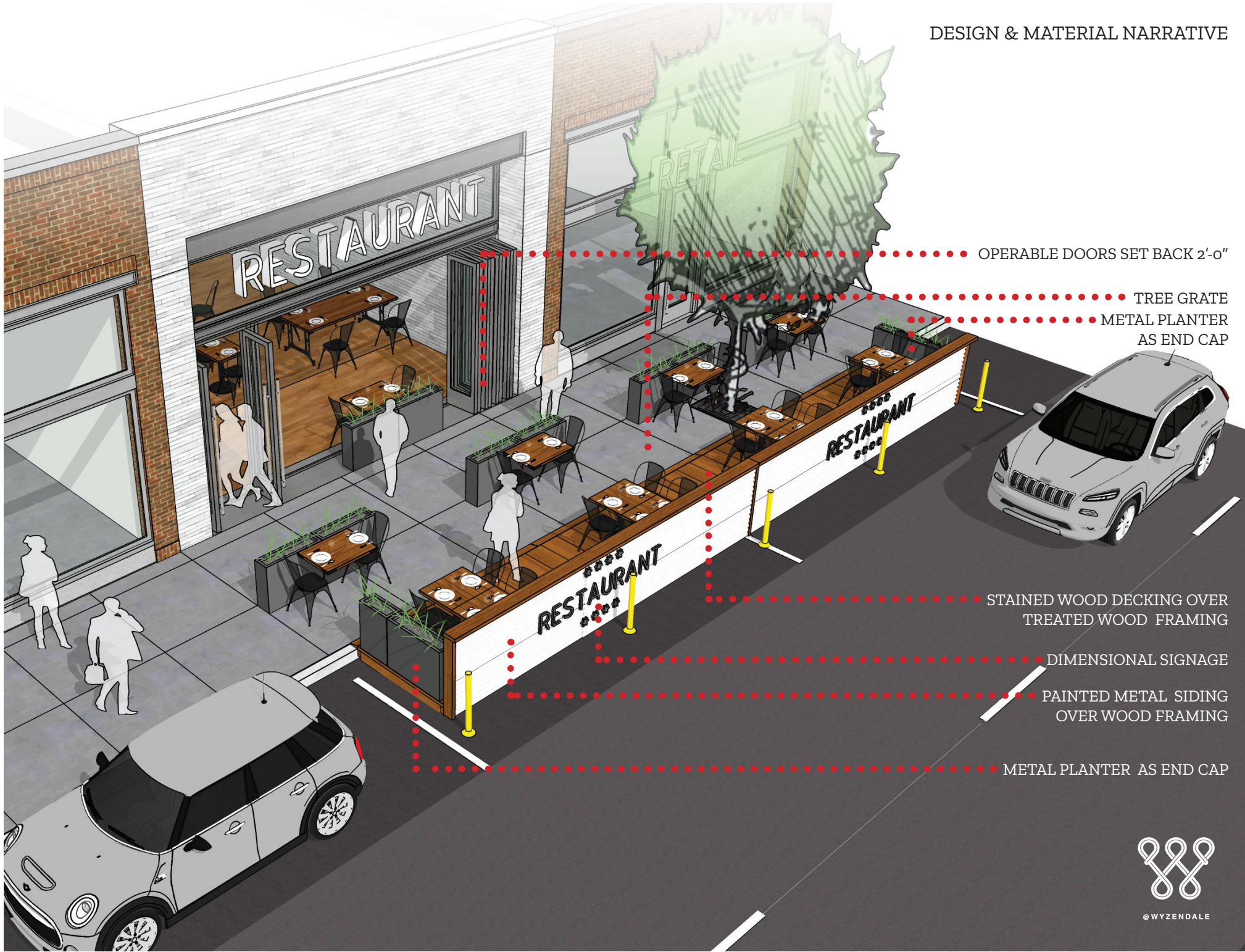
6'-0" W PARKLET
W/ BOLLARD'S

9'-0" W PARKING SPACE

+/- 12'-0" W ROADWAY



DESIGN & MATERIAL NARRATIVE



OPERABLE DOORS SET BACK 2'-0"

TREE GRATE
METAL PLANTER
AS END CAP

STAINED WOOD DECKING OVER
TREATED WOOD FRAMING

DIMENSIONAL SIGNAGE

PAINTED METAL SIDING
OVER WOOD FRAMING

METAL PLANTER AS END CAP

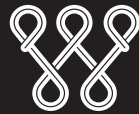


OPTIONAL CANOPY
SUNBRELLA (OR EQUAL)



@WYZENDALE





Wyzendale

312.330.3311

info@wyzendale.com